

# Integration of Earth observation satellite data and real time $^{137}\text{Cs}$ measurements in the Greek marine environment to GIS for advances in radiological remote control

## Additional Material

Below additional material is presented in the form of maps, satellite images and tables. The map contains information about Aegean Sea area, Souda Bay area and POSEIDON buoys in the Aegean Sea. Satellite images are indicative summer images of MODIS. The table presents  $R^2$  values for Souda Bay Area derived from polynomial fitting of MODIS and POSEIDON data with  $^{137}\text{Cs}$  concentrations

Map of Aegean Sea, Souda bay area and POSEIDON Buoys

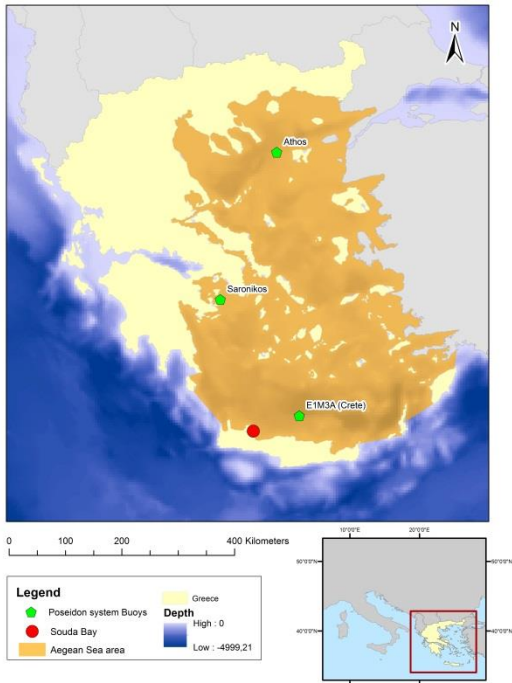


Figure 1: Map of the Aegean Sea, Souda Bay and POSEIDON buoys  
The orange indicated area in the map does not only define the Aegean Sea area, but also signifies our study area.

(Data for Bathymetry has derived from HCMR) (2003, SE Mediterranean bathymetry and coastline)

<http://arch.her.hcmr.gr/downl.htm> )

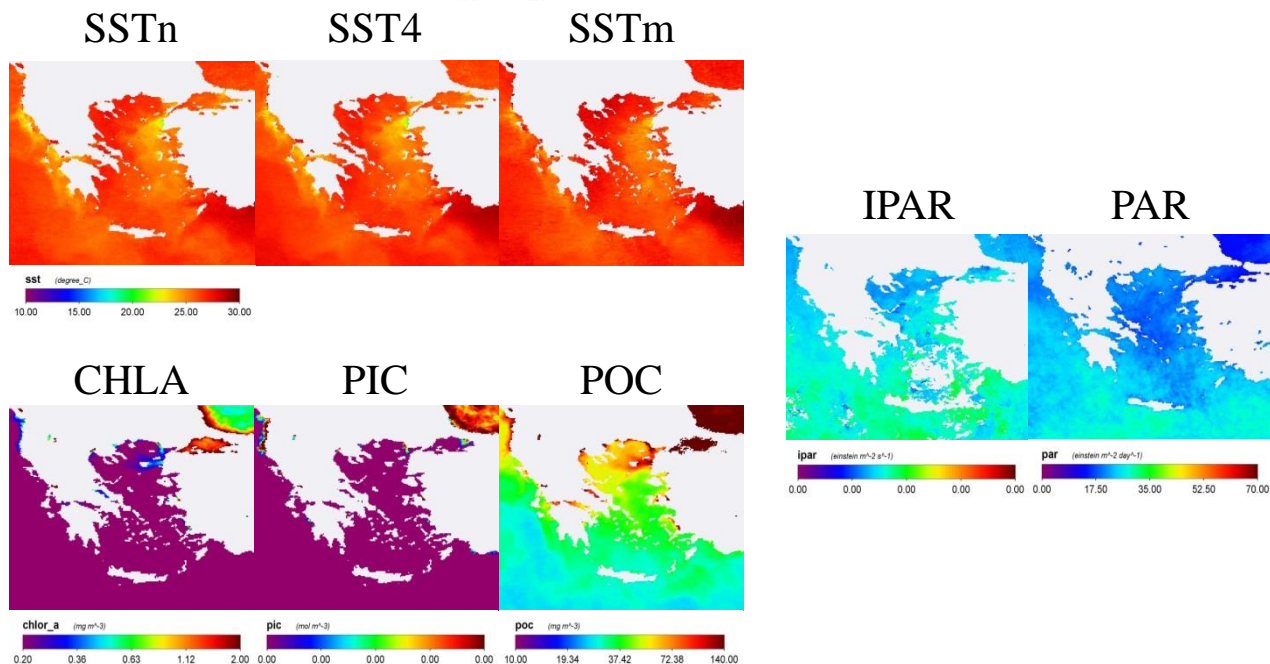


Figure 2: Indicative Summer images of AQUA MODIS L3: night Sea Surface Temperature (SSTn), night Sea Surface Temperature at  $4\mu\text{m}$  (SST4), morning Sea Surface Temperature (SSTm), Chlorophyll-A concentration (Chla), Particulate Inorganic Carbon concentration (PIC), Particulate Organic Carbon concentration (POC), Instantaneous Photosynthetically Available Radiation (IPAR) and Photosynthetically Available Radiation (PAR) for August 2012

Table of  $R^2$  values for Souda Bay Area from polynomial fitting of MODIS and POSEIDON data with  $^{137}\text{Cs}$  concentrations

$R^2$	MODIS		POSEIDON
	SSTn	SST4	SST
	0,53	0,64	0,49

Figure 3: Table of  $R^2$  values for Souda Bay Area from polynomial fitting of MODIS and POSEIDON data with  $^{137}\text{Cs}$  concentrations